



San Elijo Campus STUDENT SERVICES & ADMINISTRATION BUILDING



SPECIAL FEATURES

- The design concept centers on the notion of creating a “learning bluff” that grows naturally from the sloping campus, with the facades of the building serving as the bluff face
- The design looks to preserve the campus’ Torrey pine – the rarest pine in the United States – and use it to ‘fracture’ the design similar to how a tree can split a boulder in nature

PROJECT DESCRIPTION

The Student Services and Administration Building will replace the existing Administration building and consolidate key student services into a single location. The new 10,770 square foot facility will provide administrative offices and meeting spaces that will improve the ability of staff to serve the student body, as well as gathering and socialization spaces. Programs and services to be housed in the new building include Admission & Records, Financial Aid, and Counseling. Offices for the campus administration will also be included.

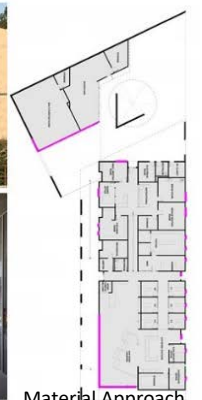
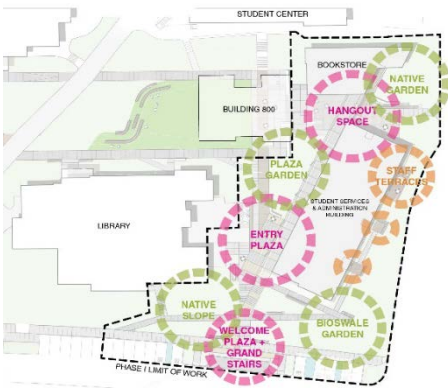
The new building is intended to provide a welcoming new gateway for the San Elijo campus. The design involves locating large portions of the building circulation to exterior covered spaces. These covered areas create several areas with seating and spaces for students to congregate, as well as additional ‘spill-out’ space for the building’s multipurpose room. The building is organized along a central circulation spine separate entrances for students; staff and faculty are located at each end. The main building lobby is located at the south-west corner of the plan, with commanding views out to the lagoon; as well as providing the iconic ‘lighthouse’ for the campus from Manchester Street.

The building’s façade will complement the exposed bluff faces surrounding the campus, using split-face concrete blocks to mimic the texture of the bluffs. An art walk will be located in the building arcade, featuring student murals on interchangeable wall mounted panels.

Additional sustainable design strategies include:

- Passive sun shading/roof overhang
- Abundance of natural light inside the building via storefronts and skylights
- North-south solar orientation for the building and circulation axis

PROJECT PARTNERS: ATHLETIC FIELD RENOVATION, OCEANSIDE CAMPUS	
Project Budget	\$13.7 million
Construction Duration	October 2019 – October 2020
Architect	Little
Program and Construction Manager	Kitchell, in association with Element Consulting and Vic Salazar Communications
Inspector of Record	Consulting Inspection Services
Landscape Architect	LandLAB
Structural Engineer	KNA Structural Engineers
Mechanical, Electrical, Plumbing (MEP) Engineer	P2S Engineering
Geotechnical Engineer	SMS Geotechnical Solutions
Environmental Consultant	Dudek
Material Testing	Construction Testing and Engineering, Inc.
General Contractor	Barnhart Reese Construction
Bond Program Team, San Elijo Campus Manager	David Dunn, Kitchell
Bond Program Team, San Elijo Project Manager	David Haddad, Kitchell
Bond Program Team, San Elijo Project Engineer	Phan Uong, Kitchell



Material Approach



Echinacea Purpurea
"Eastern Purple Coneflower"



Agave Attenuata
"Fox Tail Agave"



Matilija Poppy
"Fried Egg Flower"



Salvia Pozo Blue
"Celestial Blue Sage"