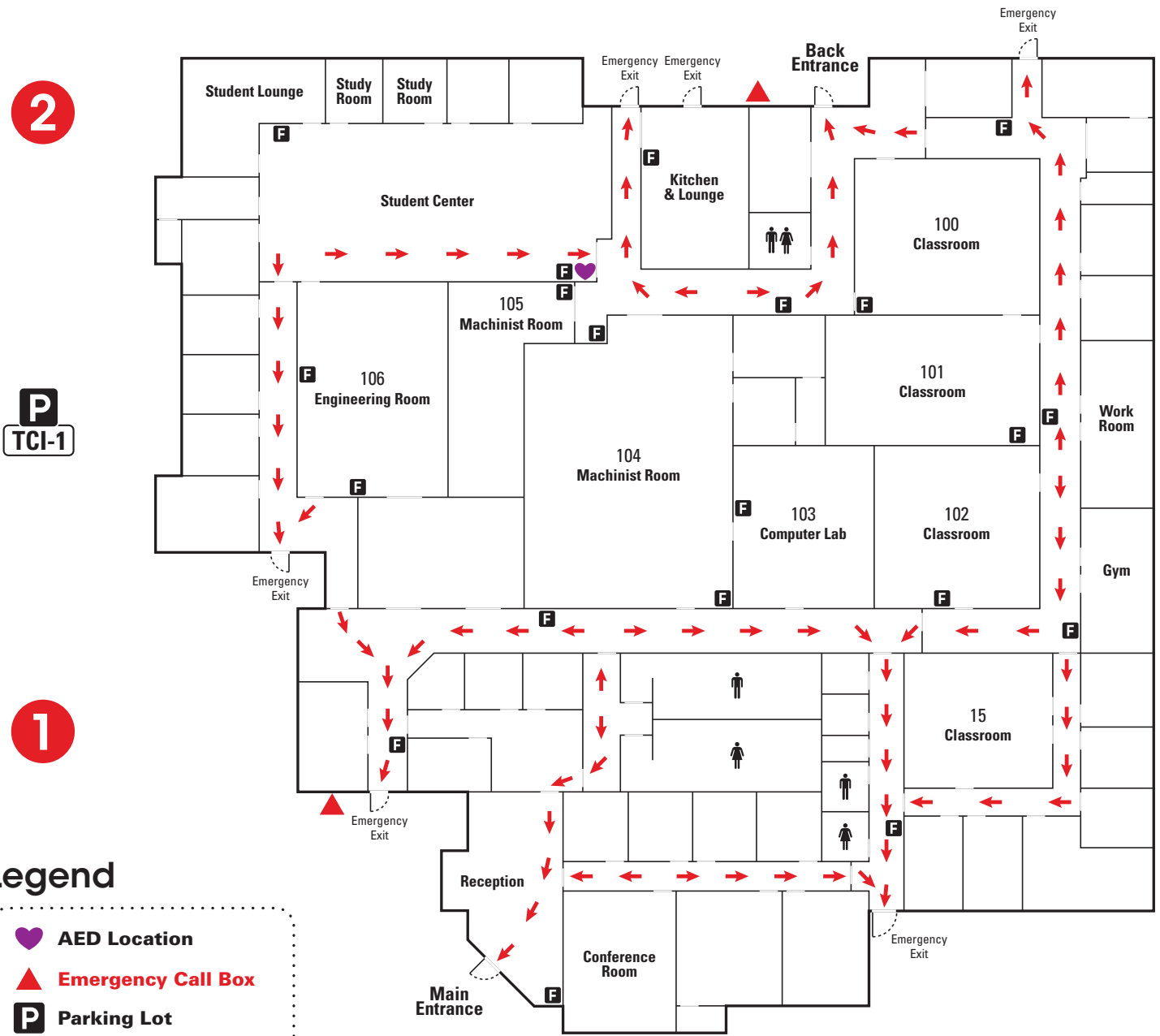


# EVACUATION MAP—TECHNOLOGY CAREER INSTITUTE

If you hear a fire alarm, siren or emergency evacuation announcement, go to the nearest Emergency Evacuation Area as indicated on the map below. Look for the large red signs posted in the Emergency Evacuation Areas.

## Emergency Evacuation Areas

- 1 Parking Lot TCI-1 near front of building
- 2 Parking Lot TCI-1 near rear of building



### Legend

- ♥ AED Location
- ▲ Emergency Call Box
- P Parking Lot
- F Fire Extinguisher
- ♂ Men's Restroom
- ♀ Women's Restroom

NOT TO SCALE

# CAMPUS EMERGENCY

From a campus phone:  
**LIFE-THREATENING EMERGENCY: 911**  
**COLLEGE POLICE: 6911**  
or  
**USE AN EMERGENCY CALL BOX**

## EMERGENCY PROCEDURES

There is no absolute way to respond to every type of emergency situation but here are some recommendations for several types of incidents.

### **If a shooting on campus occurs outside and you are inside a classroom or building:**

- Remain inside the building.
- Using a key, electronic fob, or pushing the red lock down button (if available), lock the door and close it.
- Close all blinds, stay away from windows.
- Turn off all lights.
- Stay down on the ground, do not move or peek out to see what is happening.
- Wait and listen for directions from police.

### **If a shooting occurs while you are outside:**

- Move or crawl away from the shooter or gunfire; utilize any barriers between you and the gunfire.
- Try to get inside or behind a building and stay down.
- Wait and listen for directions from police.

### **If a fire, earthquake, bomb threat, chemical or biological emergency occurs:**

- Leave the affected area and close the door behind you. (For earthquakes it is recommended that you seek cover under a table or in a doorway for a few minutes for probable aftershock, then evacuate the building, closing the door behind you.)
- Do not touch any suspected bomb, and do not use your cell phone anywhere near a suspected bomb. Do not attempt to clean up any possible chemical spill.
- Go directly to the nearest Emergency Evacuation Area (all are in open space areas—see back of card). Look for red signs posted at all sites indicating Emergency Evacuation Areas.
- Do not re-enter the classroom or other space from which you exited until you have been told it is okay to do so by fire or police personnel.

**REMOVE CARD—  
EVACUATION MAP ON BACK**