



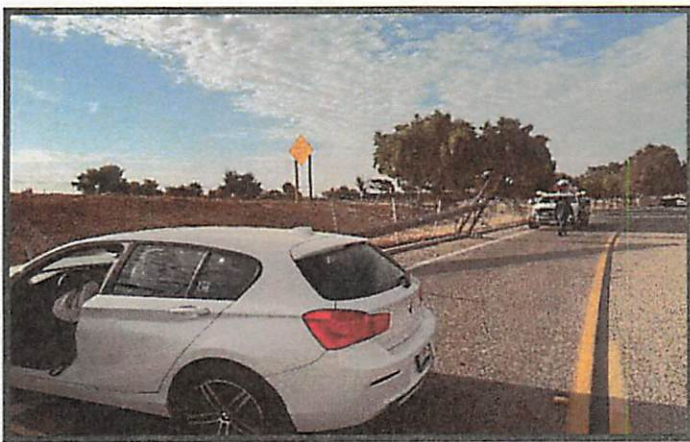
## SAFETY ALERT

### Electric Safety Training Bulletin for Downed Powerlines

On June 23, 2024, Law Enforcement responded to a traffic collision with downed powerlines crossing Interstate 5 and trolley tracks. Law Enforcement Officers moved the powerline without confirming with SDG&E that the power line had been deenergized and "Made Safe." The following safety practices should be adhered to when arriving on the scene with damaged powerline equipment:

- If possible, Park (1) span & (2) poles away from all power lines.
- Treat all powerlines as "HOT" or energized and do not touch or move them.
- Stay a minimum of 10 feet away from ALL power lines.
- Establish a safety perimeter and request SDG&E immediately. When reporting the damage, be as descriptive as possible to identify the safety hazard accurately (e.g., exposed wiring, arcing, sparking, electrical injury, etc.)
- Be aware that SDG&E powerlines can be reenergized remotely or power back feed from switching operations conducted remotely by District System Operators who monitor the powerline system.
- Be aware of "touch potential," live wires can energize any conductive material it comes in contact with and present a hazard to 1st responders and others in the area.
- Be aware of "step potential," energized conductors can create an expanding gradient of current emanating out from the source, which creates a hazard as well.
- Below is a link to SDG&E's *Electrical Safety for Law Enforcement* videos, which cover how to safely respond to these and other common electrical emergencies.

<https://spaces.hightail.com/space/hhDuq5L4A1>



**For additional information or questions, please contact these SDG&E teams:**

**Fire Coordinators | 858-503-5152 [FireCoordinators@semprautilities.com](mailto:FireCoordinators@semprautilities.com)**

**Operational Field & Emergency Readiness (OFER) | 858-503-5214 [OFERteam@sdge.com](mailto:OFERteam@sdge.com)**

Safety Alert # 006-2024-01

A handwritten signature in black ink, followed by the number "#5522".

# UTILITY EMERGENCY SAFETY TIPS

## LAW ENFORCEMENT AGENCIES



### Use the SIN acronym for Gas or Electric Incidents:

- S** Scene safety, make incident scene safe.
- I** Isolate and deny entry, establish a safe perimeter.
- N** Notify the utility company.

Establish positive communication with SDG&E representative at scene



### Electric Safety Awareness

- Treat all powerlines and pad mounted equipment as “HOT” or energized.
  - Powerlines may become re-energized without warning.
- Park (1) span and (2) poles away from an electrical incident.
- Stay a minimum of 10’ away from ALL damaged electrical equipment or electrical wires.
- Be aware of “touch potential,” live wires can energize any conductive material they contact and present a hazard to 1st responders and others in the area.
  - Traffic accidents can energize vehicles in contact with pad mounted equipment.
- Be aware of “step potential.” Energized conductors can create an expanding gradient of current emanating from the source, which creates a hazard as well.
- Wire down on vehicle with occupant(s), or in contact with pad mounted equipment:
  - Apply SIN acronym above and have occupant(s) remain in the vehicle until the line is de-energized.
  - If imminent, to leave the vehicle, instruct to jump out of the vehicle without touching the vehicle and ground at the same time, and then shuffle step away keeping both feet in contact with the ground until at least 10 feet away.
- Do not work under transmission lines:
  - When dense smoke is present.
  - While air operations (retardant or water drops) are taking place over or adjacent to the lines.
- NEVER enter a substation or other high voltage area (e.g. battery energy storage systems/BESS, etc.) without a qualified electric worker.

# UTILITY EMERGENCY SAFETY TIPS (CONTINUED)

## Natural Gas Safety Awareness

- Properties of natural gas
  - Colorless and invisible
  - Odorless, an odorant is added to make it detectible, smells like rotten eggs
  - Lighter than air and will rise upwards into the atmosphere
- Natural gas hazards
  - Highly flammable and can cause severe burns
  - Potentially explosive if confined in a structure and ignites
  - Asphyxiant, it displaces oxygen and can cause unconsciousness
- Scene Safety
  - Position vehicle out of harm's way and upwind. Do not park directly in front of the leak.
  - If you smell natural gas, you're too close. Move to a greater distance.
  - Electrical switches, vehicles, tasers, firearms, radios and cell phones are potential ignition sources, do not operate in a suspected gas filled atmosphere. A spark from these can cause gas to ignite.
- Isolate and Deny Entry
  - Evacuate people in the immediate vicinity of the leak and prohibit entry of people and vehicles.
  - Coordinate with Fire Department and SDG&E on road closures, evacuations and establishing a temporary evacuation point.
- Notify
  - Confirm that fire department and SDG&E are responding.
  - Co-locate at the Incident Command Post with Fire and SDG&E.



## SDG&E Contact Information

For assistance on electrical emergencies, the SDG&E On-duty Fire Coordinator can be reached at (858) 503-5152

For assistance on natural gas emergencies, the SDG&E OFER On-duty Representative can be reached at (858) 503-5214