

RETURN TO CAMPUS: CLICK TO LEARN MORE



Community Learning Center

MEASURE MM NAVIGATION

[HOME](#) / [OFFICE OF THE PRESIDENT](#) / [MEASURE MM](#) / [PROJECTS](#) / [PROJECTS BY CAMPUS](#) / [COMMUNITY LEARNING CENTER](#)

IN THIS SECTION



- ☐ existing
- ☐ renovated
- ☐ new construction

The Facilities Master Plan for the CLC looks to create a cohesive campus environment that is accomplished through the creation of a centralized campus quad that provides the physical elements that comprise a college campus. Active outdoor areas will knit together the instructional spaces with the new student-centered building. The quad will allow students to stay on campus for longer periods of time by providing much needed study and socialization spaces and improving the campus aesthetics.

Approved and planned projects are listed below. As additional projects are approved, scope defined, and budgets established, they will be added here. (List updated November 2021)

Project	Status
<u>Buildings 100 & 200 Renovation</u>	Completed
<u>New Student Services Building</u>	Completed
<u>New Monument Signage and Entryway</u>	Completed
Demolition of Arby's*	Completed
Demolition of Small Business Development Center (SBDC)	Completed
Parking and Building C Demo	Design
Renovation/Parking Reconfiguration	Future

*District-funded project

CONSTRUCTION SCHEDULE KEY

Spring: March 1 - May 31

Summer: June 1 - August 31

Fall: September 1 - November 30

Winter: December 1 - February 28

CAMPUS PROJECT MANAGEMENT TEAM

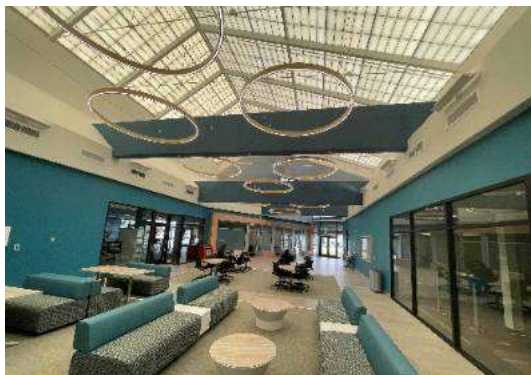
Campus Manager: Ed Dajani, Kitchell Capital Expenditures Managers (CEM)

Project Manager: Derrick Watkins, Element Consulting

Project Engineers: Erin McGowan and Stephanie Klapperich, Kitchell CEM

Buildings 100 & 200 Renovation

(Formerly known as Buildings A and B)





Project Delivery Method: Design-Bid-Build

Phase: Completed

Project Budget: \$12.7 million

Construction Duration: Spring – Fall 2021

Funding Source: Measure MM

SCOPE/SUMMARY

The project included approximately 9,000 square feet of renovations to the area where Student Services was previously located. Academic Services, the Library, faculty offices, and the California Adult Education program all underwent significant remodeling. The remaining portion of the building, comprising approximately 29,500 square feet of primarily classroom space, was also renovated.

PROJECT TEAM

Architect: SGPA Architecture & Planning

Commissioning Services: Align Builders

Mechanical, Electrical & Engineer: Glumac

Structural Engineer: Wiseman & Rohy

HVAC Controls: SC Engineers

Fire Protection Engineer: Protection Design and Consulting

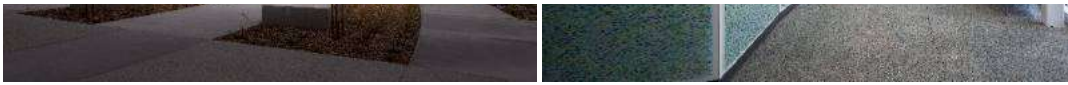
Access Controls: Exante 360

Inspector of Record: Construction Inspection Services (CIS)

New Student Services Building

(Formerly Student Resources Building)





Project Delivery Method: Design-Bid-Build

Phase: Construction

Project Budget: \$12.3 million

Construction Duration: April 2018 – October 2021

Funding Source: Measure MM

SCOPE/SUMMARY

The new 9,910 gross square feet Student Services Building provides a student-centered facility that consolidates study areas, socialization spaces, and staff space into a single, dynamic environment. It will provide an anchor for the new campus quad to encourage students to interact with the outdoor environments.

The project includes an events terrace, upgrades to the path of travel from Barnes Street to Student Services and the quad, and extensive parking renovations. A new parking lot built west of the existing building features bioswale upgrades - shallow, open and typically vegetated channels with gently sloping sides that can be incorporated into landscapes to direct and slow storm runoff and promote pollutant removal.

The project also involved the relocation of existing utilities to support the new building footprint.

PROJECT TEAM

Architect: Lord Architecture, Inc.

General Contractor: Align Builders

Landscape Architect: The Lightfoot Planning Group

Civil Engineer: Snipes-Dye Associates

Electrical Engineer: Johnson Consulting Engineers

Mechanical & Plumbing Engineer: ALM Consulting Engineers

Structural Engineer: OGonzalez Inc. Engineers

Inspector of Record: Consulting & Inspection Services

Interior Design: Hasenbeck Interior Design

Energy Consultant: STOK

New Monument Sign And Entryway



Project Delivery Method: Design-Bid-Build

Phase: Completed

Project Budget: \$1.1 million

Construction Duration: April 2019 - January 2021

Funding Source: Measure MM

SCOPE/SUMMARY

A new monument sign and entry structure now provides an iconic and welcoming identity for the Community Learning Center campus and helps improve wayfinding.

PROJECT TEAM

Inspector of Record: Alliance Engineering

Architect: WLC Architects

General Contractor: Conan Construction

Civil Engineer/Landscape Architect: O'Dell Engineering

Geotechnical Engineer: SMS Geotechnical Solutions, Inc.

Structural Engineer: SDSE Structural Engineers

Electrical Engineer: IMEG Corp.

Inspector of Record: Alliance Engineering



COMMUNITY LEARNING CENTER



OCEANSIDE



SAN ELIJO



TECHNOLOGY CAREER INSTITUTE



760.757.2121

888.201.8480

Contact MiraCosta College

Popular Resources

[Academic Calendars](#)

[Apply Now](#)

[Bookstore](#)

[College Police](#)

[Diversity, Equity & Inclusion](#)

[Employee Directory](#)

[Maps and Parking](#)

[Register for Classes](#)

[SURF: Student Portal](#)

Compliance

[Accessibility](#)

[Accreditation](#)

[Bias Incident Report](#)

[Board & Administrative Policies](#)

[Board of Trustees](#)

[Equal Opportunity](#)

[FERPA](#)

[Title IX & Discrimination](#)

[Nondiscrimination](#)

Follow Us



Explore

[Athletics](#)

[Class Schedule](#)

[Degrees and Certificates](#)

[Events](#)

[Employment](#)

[Financial Aid and Scholarships](#)

[LGBTQIA+](#)

[Measure MM](#)

[Student Help Desk](#)

Administrative

[Cashiering](#)

[Donors](#)

[Facilities](#)

[Fiscal Services](#)

[Give Today: MiraCosta Foundation](#)

[Human Resources](#)

[Purchasing and Material Management](#)

[Vendors and Contractors](#)